

Jaguar Connection Newsletter

Seiter Education Center

August 10, 2018

It is our pleasure to welcome everyone back to another great year at Seiter Education Center. We are excited to all be back and are looking forward to the 2018-19 school year. It is our mission to make every moment a teachable moment and every setting a teachable setting because engagement is critical for learning. During the 2018-19 school year, we plan to continue working to achieve our School Improvement Goals around Literacy & Communication, Family & Community Engagement and Positive Behavior Interventions and Supports. In addition to this work, we will be working to implement Restorative Practices.

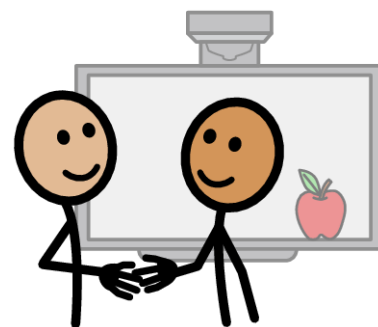
If you have any questions, please do not hesitate to reach out.

Teresa Boyer, Kristen Larson & Rachel Tabron

2018-19 Seiter Open House

You are invited to an Open House for
Seiter Education Center
August 16th, 2018
6:00pm to 7:30pm

Meet your child's teacher, complete enrollment
paperwork and enjoy ice cream.



A Note from the Bus Garage

Bus drivers will be driving their routes for the 2018-19 school year the week of August 13th. Once they know approximate drop-off and pick-up times they will be contacting parents with times.

Also, when you receive your student enrollment packets, please complete the Student Transportation Card and return to the driver on August 21st.

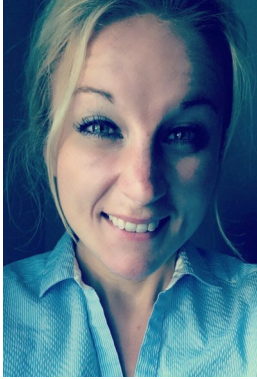


Upcoming Events

August 13-20– No School
August 16- Open House
August 31– No School
September 3– No School
September 21– PBIS Assembly
September 24-28– No School
October 12– Picture Day
October 19– End of 1st Marking Period
November 30– Picture Retakes

Welcome New Staff

Tarra Boris
Social Worker



Angela Engbers
Para-Educator



Emily LePard
Middle/High School Teacher



Tyler Schultz
Elementary Teacher



Hannah Finegan
Elementary Teacher



Janelle Beni
Para-Educator



Elizabeth Thornburg
Para-Educator



Safe at Seiter

We are constantly working to ensure Seiter Education staff and students are safe at all times. Staff have several safety measures in place designed to ensure students' safety.

Building Emergency Response Team

The BERT is a committee of Seiter Education Center staff which focuses solely on ensuring that we have effective policies and well practice procedures in the event of a Building Emergency. Annually, this team reviews the Emergency Response Plan for Seiter Education Center. The Emergency Response Plan is a 50-page document that is approved by the MAISD Board of Education. A one-page abridged copy of this plan is posted in every room at Seiter. This team also runs the state required emergency drills and meets after every drill to debrief.

Drills

The state of Michigan requires all public schools to practice their emergency response plans multiple times throughout the school year. We master our fire drill procedures five times a year, tornado procedures two times and lockdown drills three times. Drills are scheduled in September for the entire school year.

Fire Drills

In the event of a fire, staff and students are alerted by the fire alarm. The fire alarms make an audible sound and flash a bright light. Staff and students follow the evacuation route, also posted in every room, to the nearest fire exit. Once outside administrators account for students and staff.

Tornado Drills

In the event of a tornado warning, an announcement is made over the PA system to notify individuals in the building. Staff and students proceed to the closest predefined area with all interior walls and absent of windows. Staff and students are taught to protect their bodies by facing an interior wall, place their knees and elbows on the ground, hands over the back of their head. Students are not removed from wheelchairs.

Lockdown Drills

The Building Emergency Response Team has identified three different types of lockdowns based on different situations that could arise.

Shelter In Place: Activities continue within the building. Students and staff are brought in from the playground, external doors are locked and covered. This type of response is appropriate when there is an event in the community which may pose a slight risk to the school. Examples could include active bank robbery in Greenville, escalated individual in the parking lot or other police activity in the immediate area.

Internal Threat: Staff immediately lock classroom door, double check the door windows are covered and barricade the classroom door with furniture. Staff and students are expected to run, hide or fight. Based on the situation, staff may direct students to run out of the school to a safe nearby building, hide away from the fatal funnel or if presented with an intruder fight back. This type of threat would include an individual inside the building that poses a significant threat to staff and/or students.

Safe at Seiter (continued)

External Threat: Staff immediately lock classroom door, cover exterior windows. We also barricade external doors and windows with furniture. Staff and students are expected to run, hide or fight. Based on the situation, staff may direct students to run to a safe place in the building, hide away from the fatal funnel or if presented with an intruder fight back. This type of threat would include an individual outside the building on school property that poses a significant threat to staff and/or students.

Additional Safety Measures

Due to the population of the Seiter student body, it is not uncommon for us to have incidents that make the hallways less predictable for a period of time. To protect the safety of students and the dignity of the student(s) in crisis, Seiter staff have implemented a procedure to limit the use of the hallways and increase supervision. Staff members are alerted of the incident when "Students please remember to be safe, independent and to communicate" announced over the PA system. When staff hear this announcement, they close and lock their doors. If they need to use the halls, they first check for the location of the incident prior to using the hallway.

Visitor Policy

This summer while reviewing building procedures, we realized that our visitor policy needed to be updated to align with Montcalm Area Intermediate School District School Board Policy.

Any volunteer who works with or has access to students shall be screened through the Internet sites for the Sex Offenders Registry (SOR) list, the Internet Criminal History Access Tool (ICHAT) criminal history records check and the Offender Tracking Information System (OTIS) prior to being allowed to participate in any activity or program.

MAISD Board Policy 4120.09

Effective August 21, 2018 prior to having access to students, visitors will need to complete a background check form and have it be approved by Human Resources monthly. Please reach out to your child's program supervisor or the building principal, Rachel Tabron, with any questions.

Nursing Notes

Welcome back to school! The MAISD has a nursing staff of 3 nurses, Brenda Bartula RN, Vie Adams Lpn, and Lisa Van Dyke Lpn. We are always happy to help you and your student with all their health care needs.

Please make sure to have your student's immunizations up to date to attend school or obtain an immunization waiver through the Mid-Michigan Health Department. If your student needs immunizations, you can step up an appointment with the Mid-Michigan Health Department at 989-831-5237.

Please remember that if your student is to receive medications at school, you will need to fill out the Medication/Treatment Form found in your back to school packet or ask your student's teacher for one. If you would like your student to receive over the medications such as Tylenol or Ibuprofen you will need to fill out the Medication form as well and provide



What We Are Learning

Some of the classrooms at Seiter Education Center utilize Unique Learning System, ULS, as their main curriculum. Each month has a different theme and all of the reading, writing and math activities are based around that theme. Below are the themes for September.

Mrs. Heather's Class



This Is My School (Government)

Introduces authority figures and rules at school.

Mr. Kory's Class



Understanding Laws and Rights (Personal Life)

Describes individual rights guaranteed by law with an emphasis on self-advocacy.

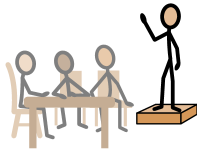
Mrs. Jill's Class



Our Leaders, Our World (Government)

Examines leaders at the world, national, state and local events.

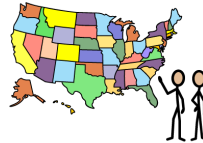
Mrs. Rhonda's Class



We Have Leaders (Government)

Introduces the basic role of authority figures at the school, local, state and national levels.

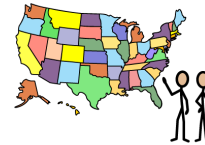
Ms. Emily's Class



Leaders in Our Lives (Government)

Identifies the roles of federal, state and community leaders and their impact in our lives.

Mr. Vince's Class



Leaders in Our Lives (Government)

Identifies the roles of federal, state and community leaders and their impact in our lives.

Truancy

It's important that students regularly attend school. There is a direct correlation between attendance and achievement. If your student is going to be absent, please contact their classroom teacher to excuse the absence. If your child has 3 or more unexcused absences or 10 more excused absences, the school district may begin the truancy process. Please remember that after 10 excused absences, all absences will be unexcused without a physician's note.

Lunch Reminders

If you plan to bring your child in after 8:50am and he/she will be eating a school lunch, please contact Carol Lewis (616-225-4780) by 9:10am to order a lunch. This ensures every student has a lunch. Thank you for your help!



Seiter Student Calendar

June '18							July '18							August '18							September '18						
Su	M	Tu	W	Th	F	Sa	Su	M	Tu	W	Th	F	Sa	Su	M	Tu	W	Th	F	Sa	Su	M	Tu	W	Th	F	Sa
					1	2	1	2	3	4	5	6	7	5	6	7	8	9	10	11	2	3	4	5	6	7	8
3	4	5	6	7	8	9	8	9	10	11	12	13	14	12	13	14	15	16	17	18	9	10	11	12	13	14	15
10	11	12	13	14	15	16	15	16	17	18	19	20	21	19	20	21	22	23	24	25	16	17	18	19	20	21	22
17	18	19	20	21	22	23	22	23	24	25	26	27	28	26	27	28	29	30	31	23	24	25	26	27	28	29	
24	25	26	27	28	29	30	29	30	31												30						

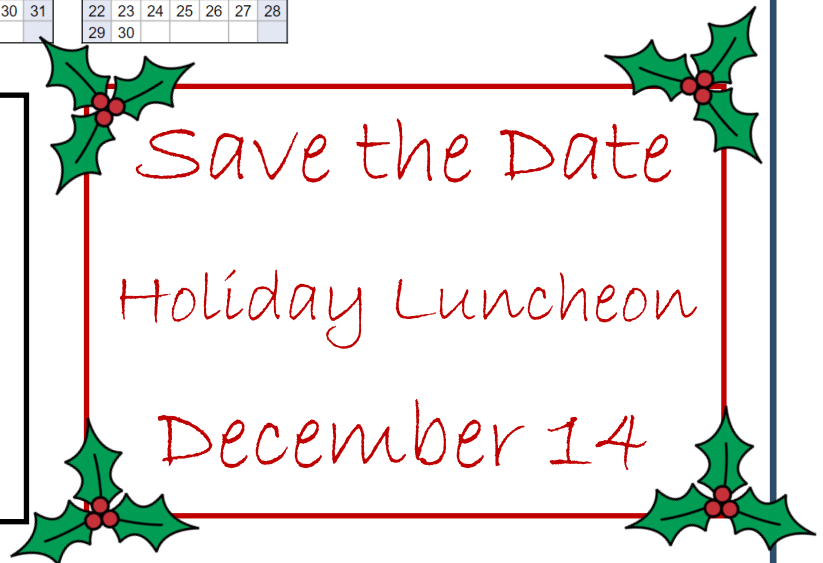
October '18							November '18							December '18							January '19						
Su	M	Tu	W	Th	F	Sa	Su	M	Tu	W	Th	F	Sa	Su	M	Tu	W	Th	F	Sa	Su	M	Tu	W	Th	F	Sa
											1	2	3	2	3	4	5	6	7	8	1	2	3	4	5		
1	2	3	4	5	6		4	5	6	7	8	9	10	9	10	11	12	13	14	15	6	7	8	9	10	11	12
7	8	9	10	11	12	13	11	12	13	14	15	16	17	16	17	18	19	20	21	22	13	14	15	16	17	18	19
14	15	16	17	18	19	20	18	19	20	21	22	23	24	23	24	25	26	27	28	29	20	21	22	23	24	25	26
21	22	23	24	25	26	27	25	26	27	28	29	30		30	31						27	28	29	30	31		
28	29	30	31				31																				

February '19							March '19							April '19							May '19						
Su	M	Tu	W	Th	F	Sa	Su	M	Tu	W	Th	F	Sa	Su	M	Tu	W	Th	F	Sa	Su	M	Tu	W	Th	F	Sa
					1	2					1	2	3											1	2	3	4
3	4	5	6	7	8	9	3	4	5	6	7	8	9	7	8	9	10	11	12	13	5	6	7	8	9	10	11
10	11	12	13	14	15	16	10	11	12	13	14	15	16	14	15	16	17	18	19	20	12	13	14	15	16	17	18
17	18	19	20	21	22	23	17	18	19	20	21	22	23	21	22	23	24	25	26	27	19	20	21	22	23	24	25
24	25	26	27	28			24	25	26	27	28	29	30	28	29	30					26	27	28	29	30	31	

June '19							July '19							August '19							September '19						
Su	M	Tu	W	Th	F	Sa	Su	M	Tu	W	Th	F	Sa	Su	M	Tu	W	Th	F	Sa	Su	M	Tu	W	Th	F	Sa
						1		1	2	3	4	5	6					1	2	3							
2	3	4	5	6	7	8	7	8	9	10	11	12	13	4	5	6	7	8	9	10	1	2	3	4	5	6	7
9	10	11	12	13	14	15	14	15	16	17	18	19	20	11	12	13	14	15	16	17	8	9	10	11	12	13	14
16	17	18	19	20	21	22	21	22	23	24	25	26	27	18	19	20	21	22	23	24	15	16	17	18	19	20	21
23	24	25	26	27	28	29	28	29	30	31				25	26	27	28	29	30	31	22	23	24	25	26	27	28
30																					29	30					

- Key**
- School Day
 - Early Release Day
 - Non-School Day

We are Safe
We are Independent
We Communicate
We are the Jaguars!



Programs for students with Severe Cognitive Impairment

Nursing
616-225-4794

Transportation
616-225-4818

Seiter Front Office
616-225-4720

Cafeteria
616-225-4780

Teresa Boyer
616-225-4712
616-557-5740

Kory Stevens
616-225-4786

Jill Stevens
616-225-4742

Heather Keur
616-225-4794

Programs for students with Emotional Impairments

Kristen Larson
616-225-4826
616-970-0715

Terry Eubank
616-225-4744

Hannah Finegan
616-225-4768

Tyler Schultz
616-225-4812

Programs for students with Autism Spectrum Disorder

Rachel Tabron
616-225-4724
616-894-2930

Vince Truskowski
616-225-4874

Emily LePard
616-225-4792

Rhonda Waldorf
616-225-4882